

Do not put your name anywhere on the assignment, other than on the back of this sheet of paper. Staple your answers on the front of this sheet of paper. Failure to follow these directions will cost you 1 point. Your assignment will be typed, except graphs can be drawn by hand and mathematical equations can be done by hand. Failure to type it will cost you 10 points.

1) Briefly explain each answer including a short description of how you reached the conclusion and show all mathematical work.

A) (5 points) What is the value of Cars when $TV = 6$?

B) (10 points) What is the approximate slope when $TV = 2$?

C) (10 points) What is the opportunity cost of the fifth TV?

D) (5 points) What is the opportunity cost of the third car?

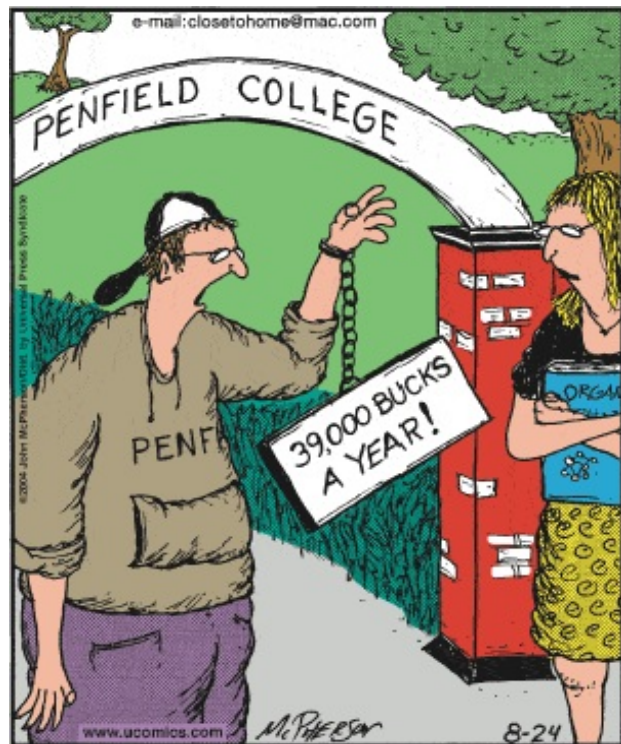
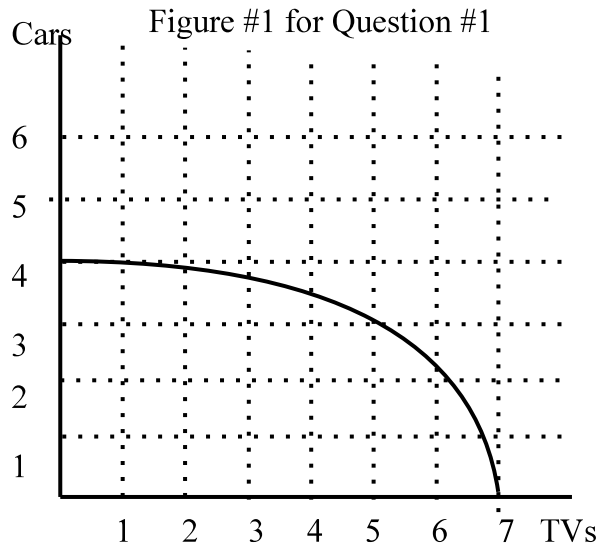
2) (15 points) Assume the \$39,000 in the comic strip by John McPherson is the value of the opportunity costs of a year at Penfield College. If you were his father, what things would you have included in calculating the number? Explain your logic and include at least four items. (More of his comics can be found at <http://www.closestohome.com/>.)

3) (10 points) Which part of my web page, <http://mysite.bethanywv.edu/wcsaplar/> do you think will be most helpful? Why? What is the URL for the first exam from this class last semester? Is anything missing that you would like to see?

4) (5 points) Which part of the Department of Economics and Business's web page, <http://www.bethanywv.edu/economics/> do you think will be most helpful? Why? Is anything missing that you would like to see?

5) (20 points each) Illustrate these events on separate PPFs (PPCs) for corn and metal desks. Explain why the curve moved as drawn.

- A) A new fertilizer is invented.
- B) A new iron deposit is found.



"My dad is making me wear this until I get my GPA over 2.2."